

Native Plant Restoration to Support Sage Grouse Habitat

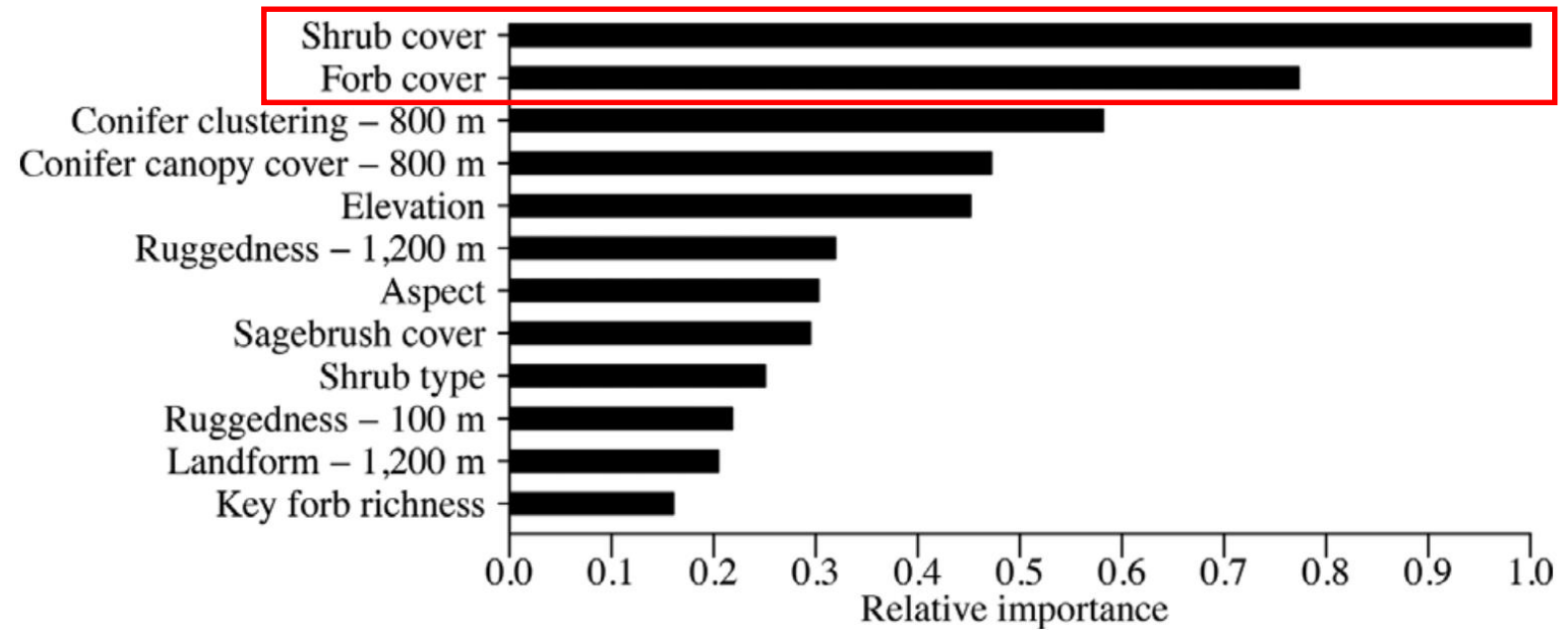
Francis Kilkenny

U.S. Forest Service, Rocky Mountain Research Station, Boise, Idaho

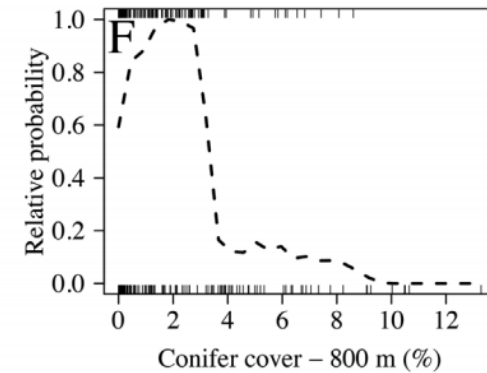
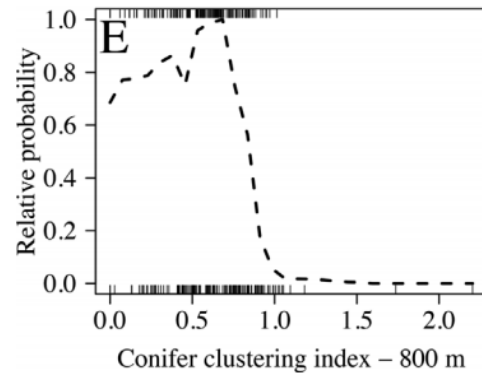
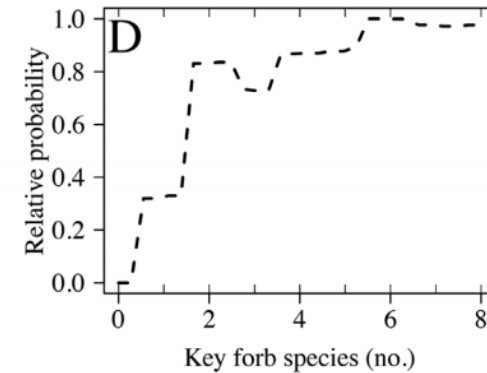
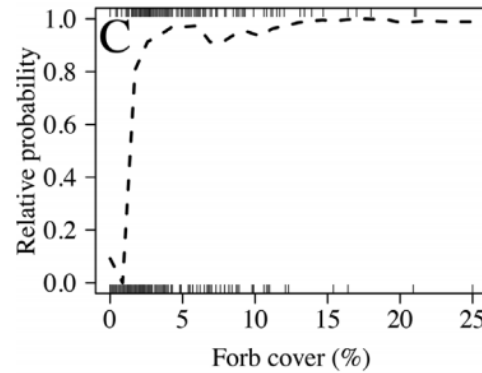
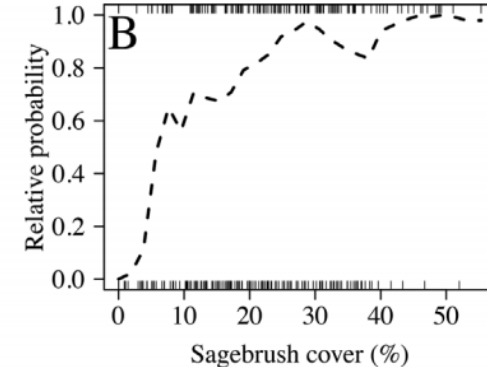
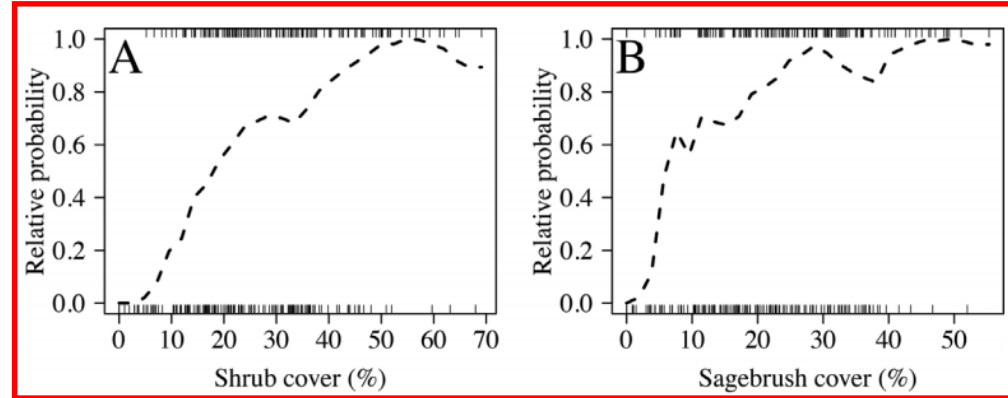
Special thanks: Jeff Ott, Danny Summers, Tyler Thompson, Steve Peterson, Kevin Gunnell, BLM staff, UDWR field crews, BYU field crews, members of the 1999-2002 study



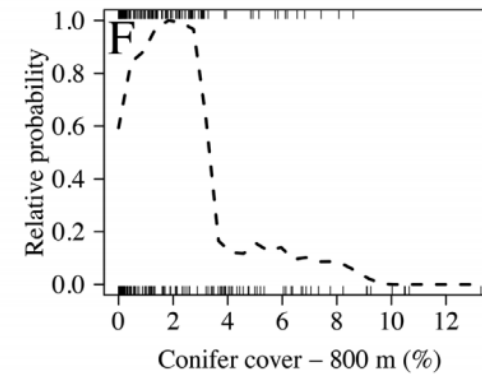
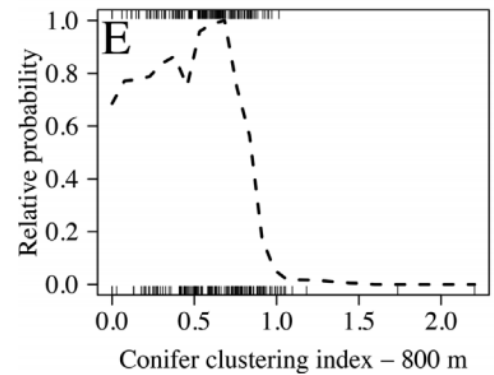
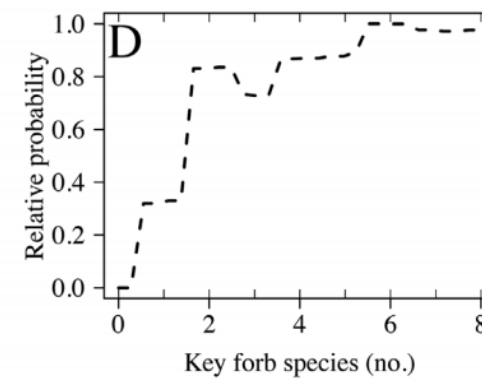
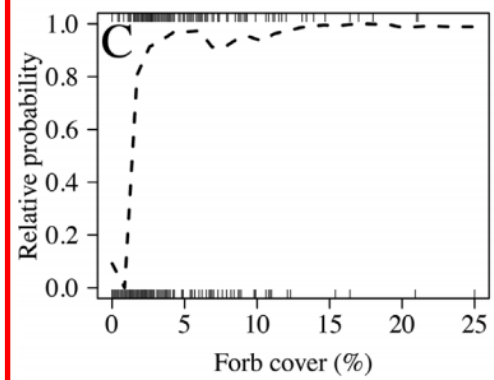
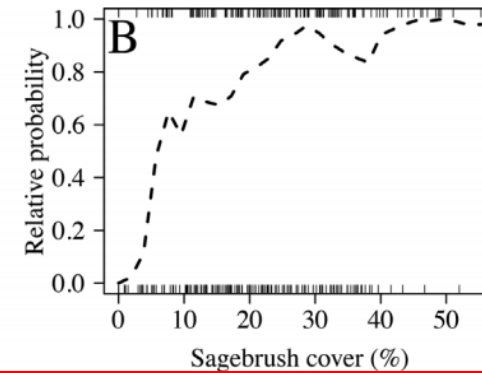
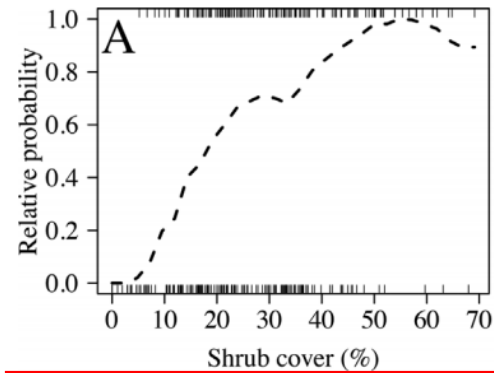
Sage grouse habitat requirements – nest sites



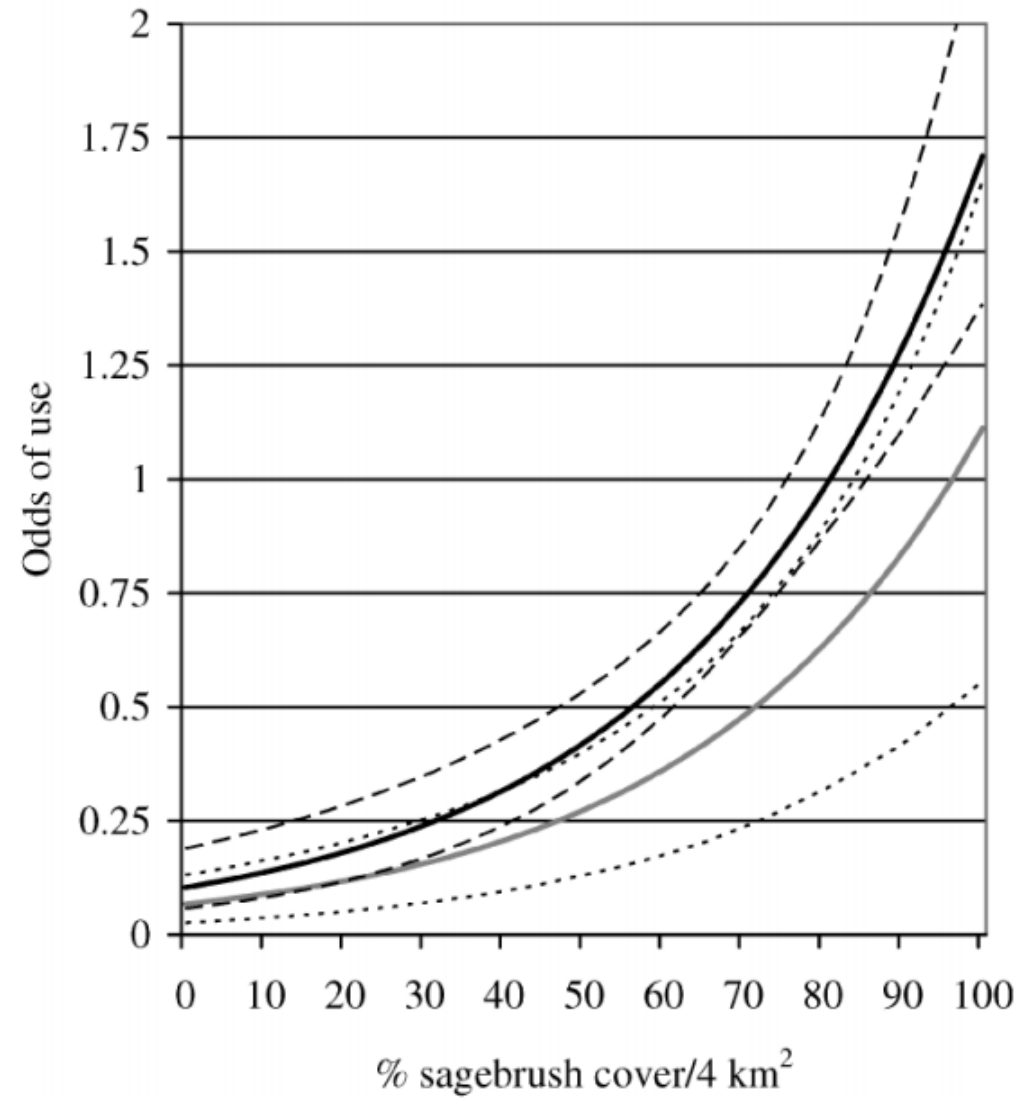
Sage grouse habitat requirements – nest sites



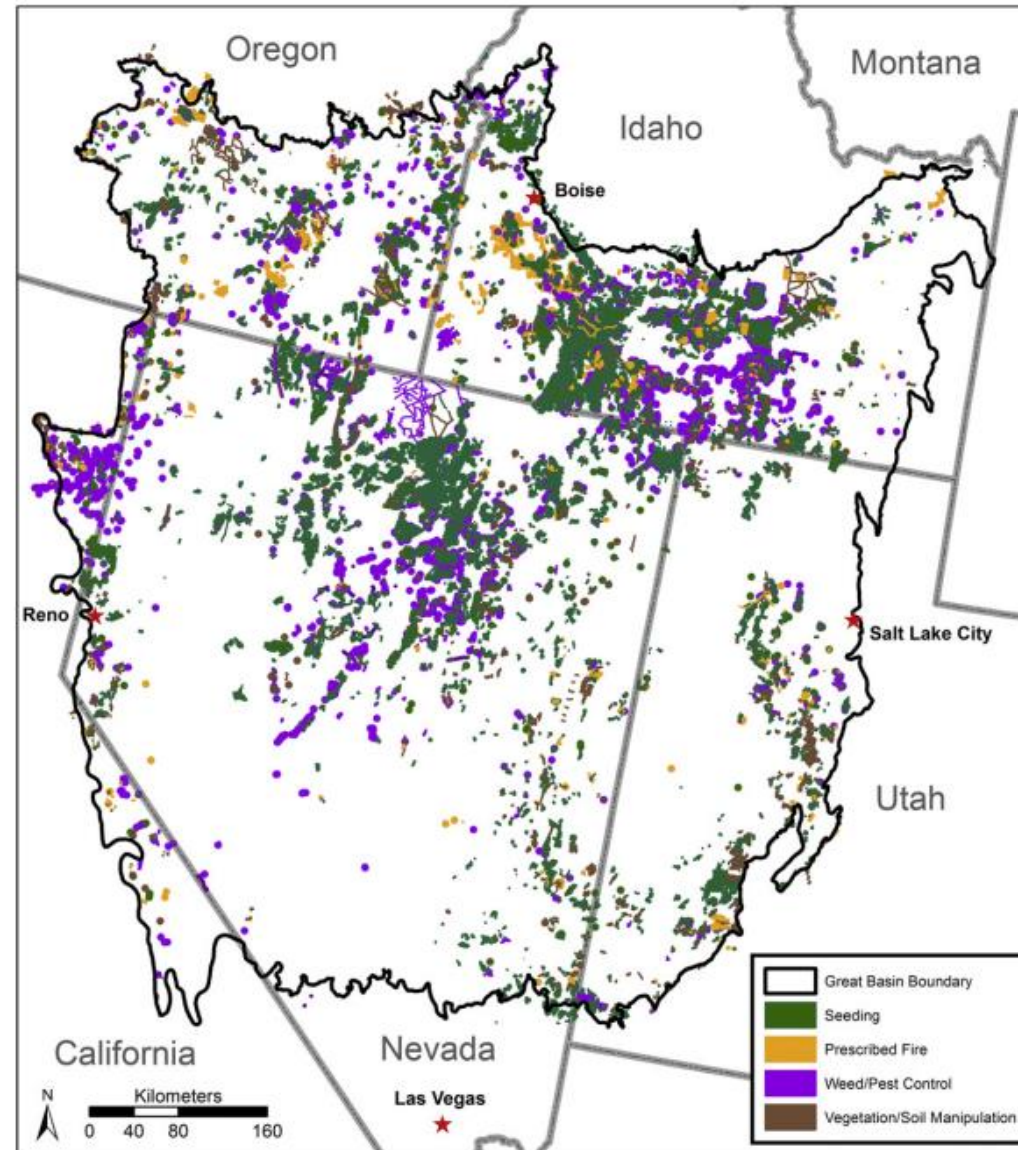
Sage grouse habitat requirements – nest sites



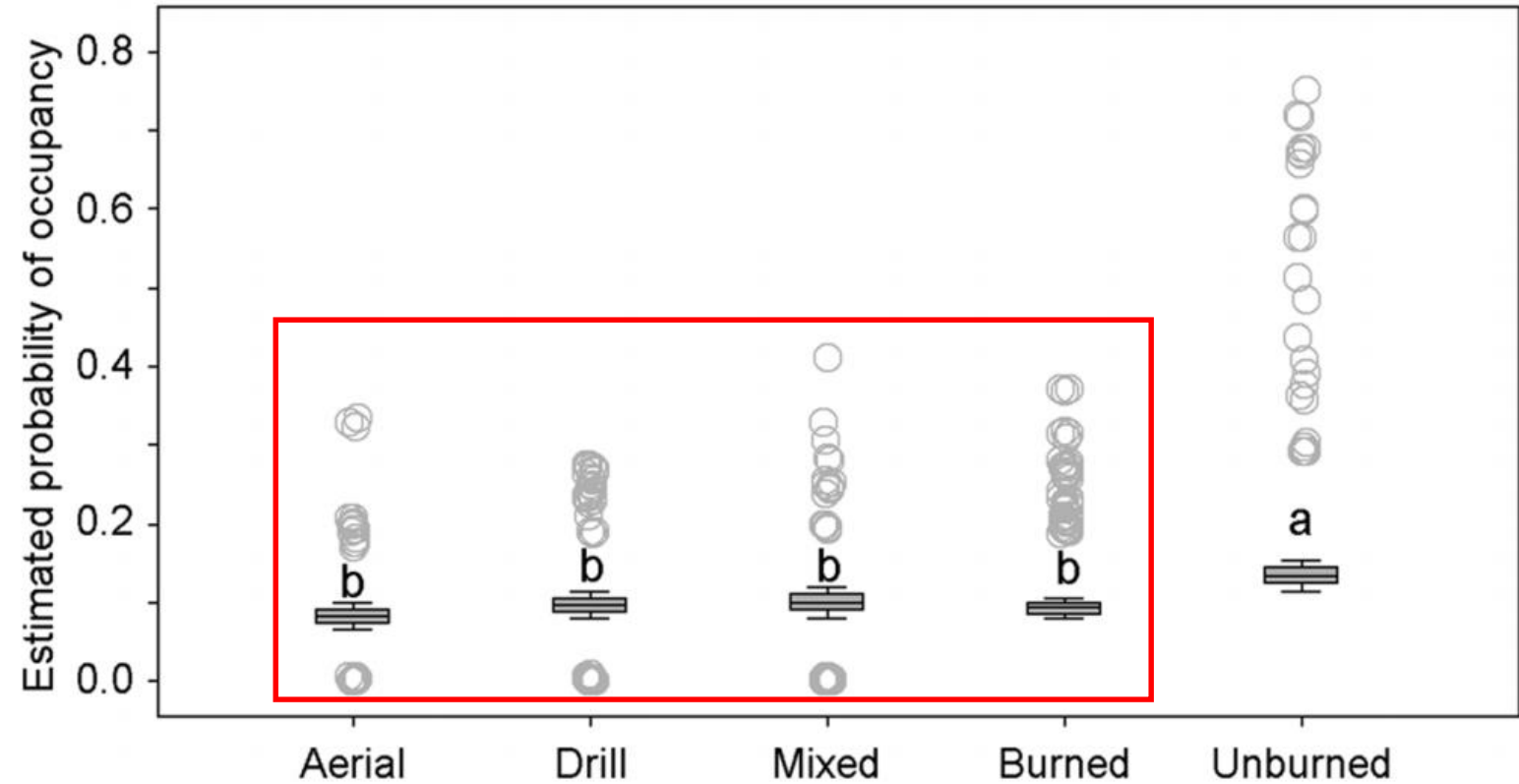
Sage grouse habitat requirements – winter range



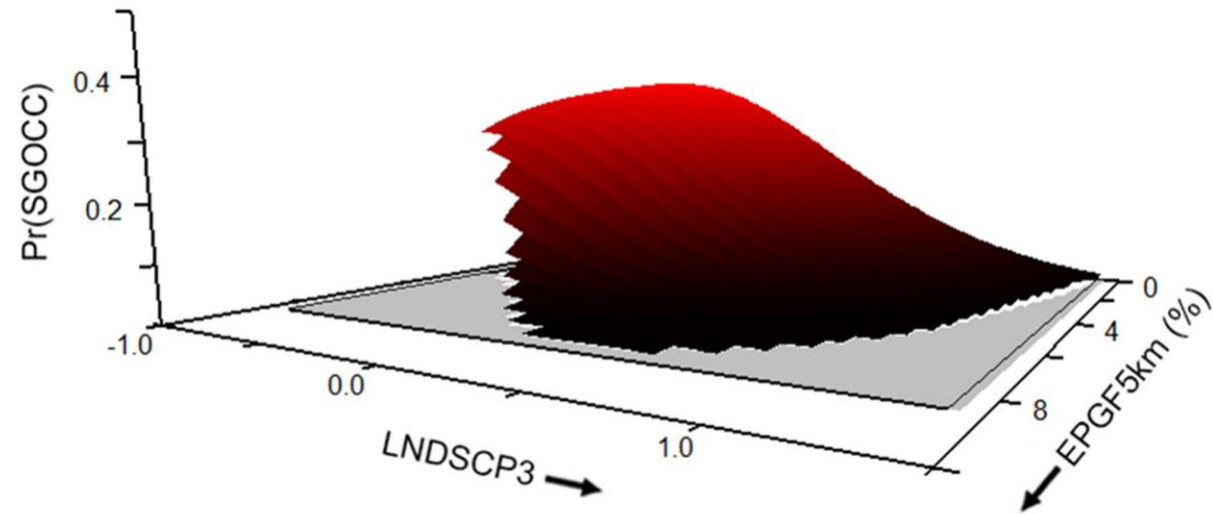
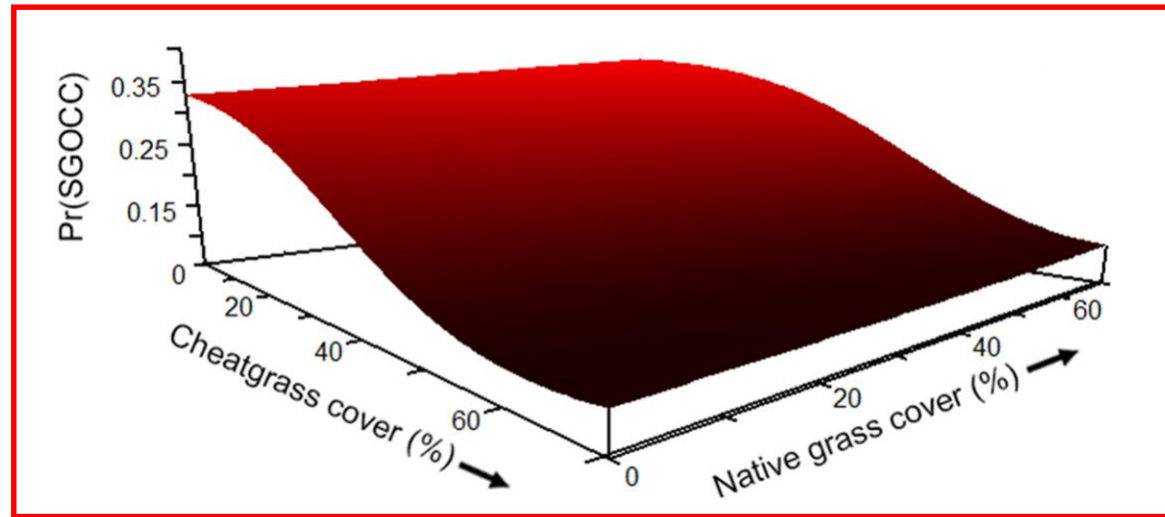
Conventional seeding practices are not working



Conventional seeding practices are not working



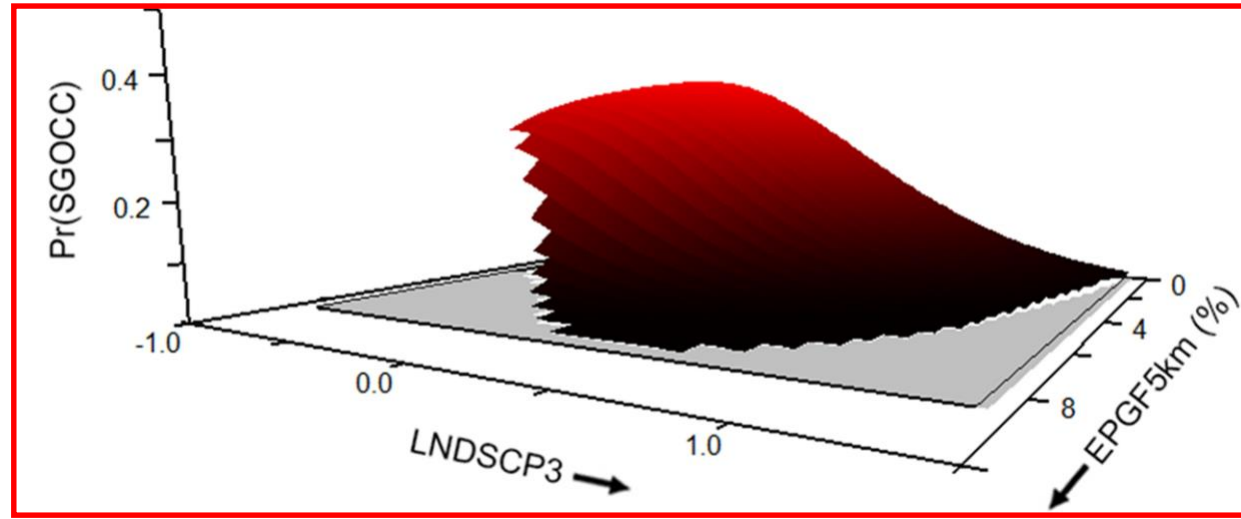
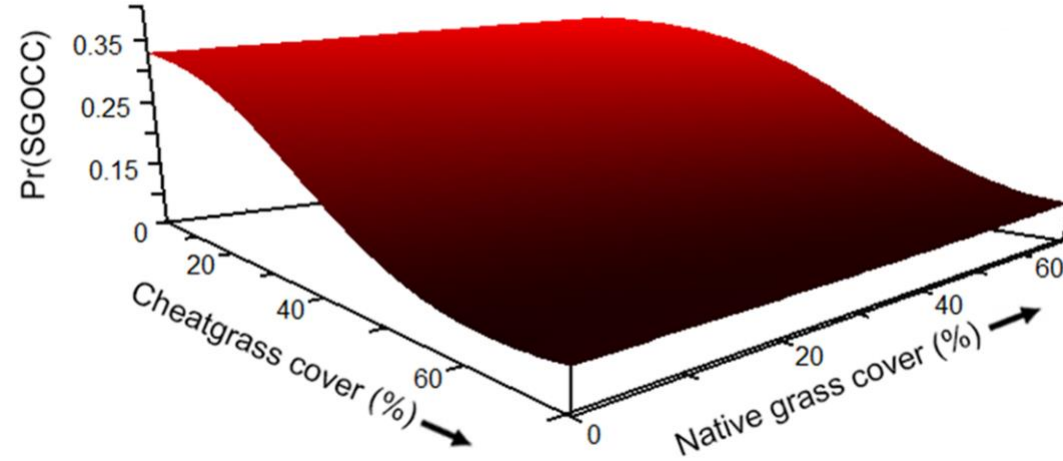
Conventional seeding practices are not working



Less sagebrush cover, more disturbance, more development

More non-native perennial grasses

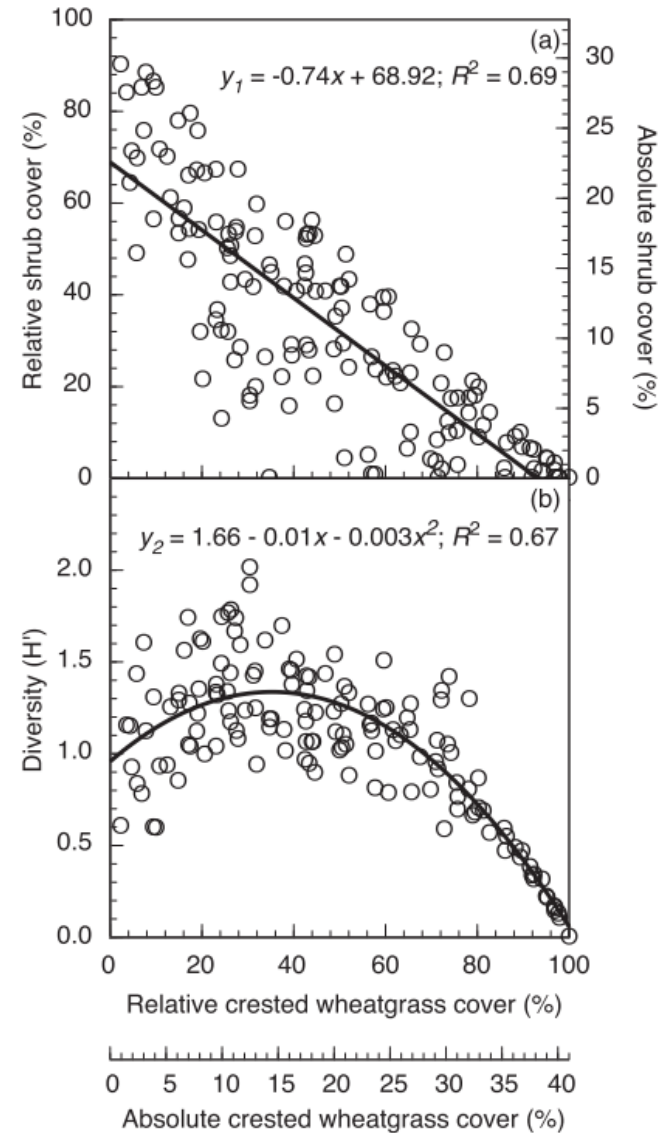
Conventional seeding practices are not working



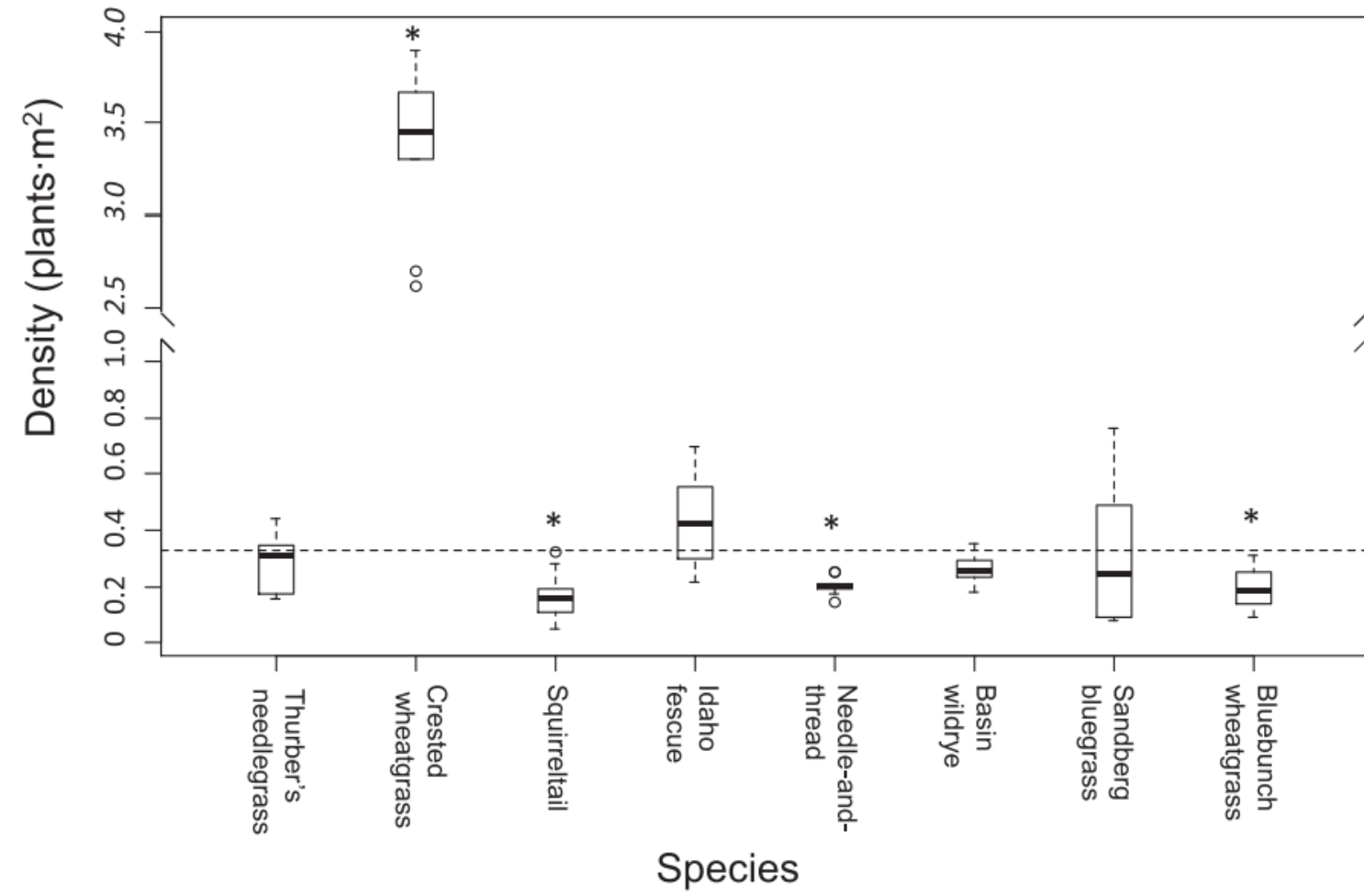
More non-native perennial grasses

Less sagebrush cover, more disturbance, more development

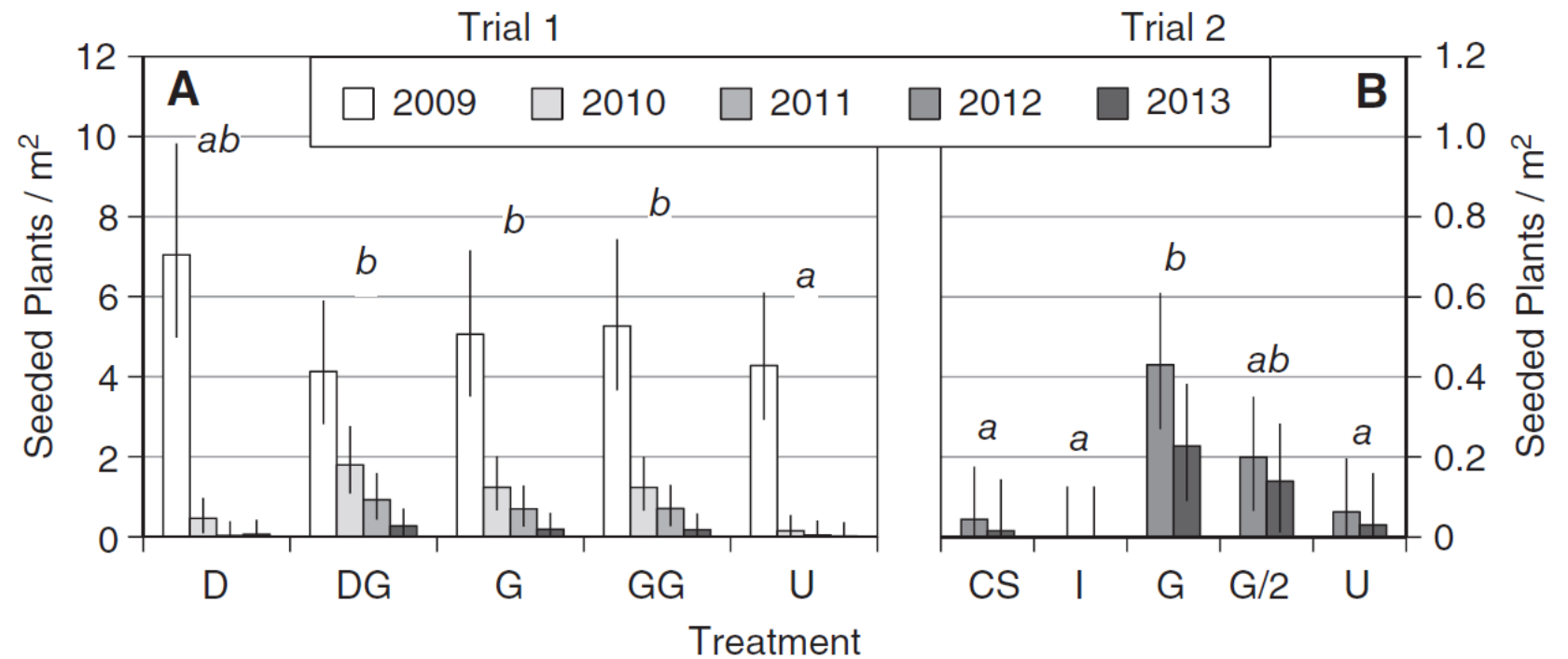
Conventional seeding practices are not working – non-native perennial grasses



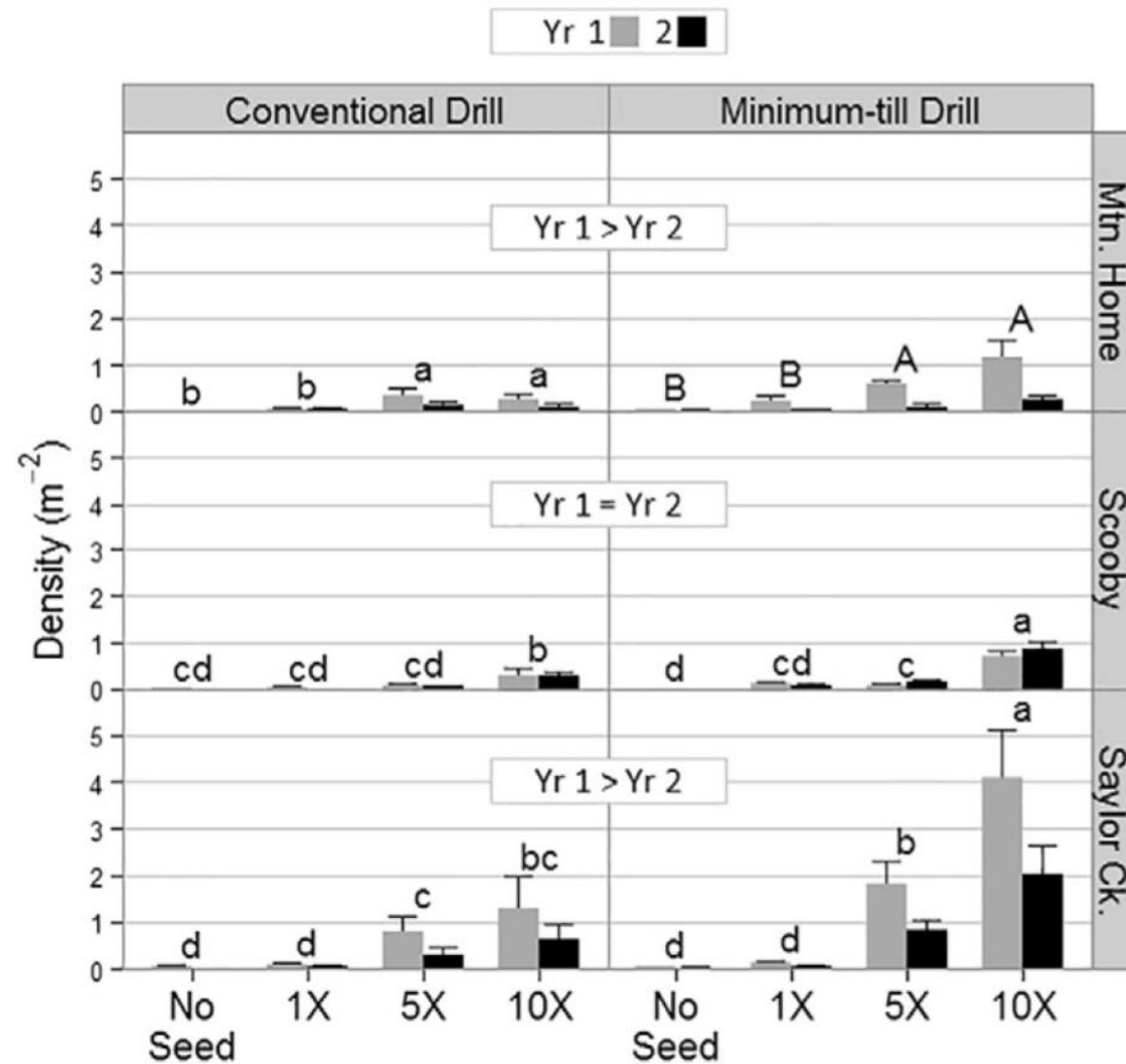
Conventional seeding practices are not working – non-native perennial grasses



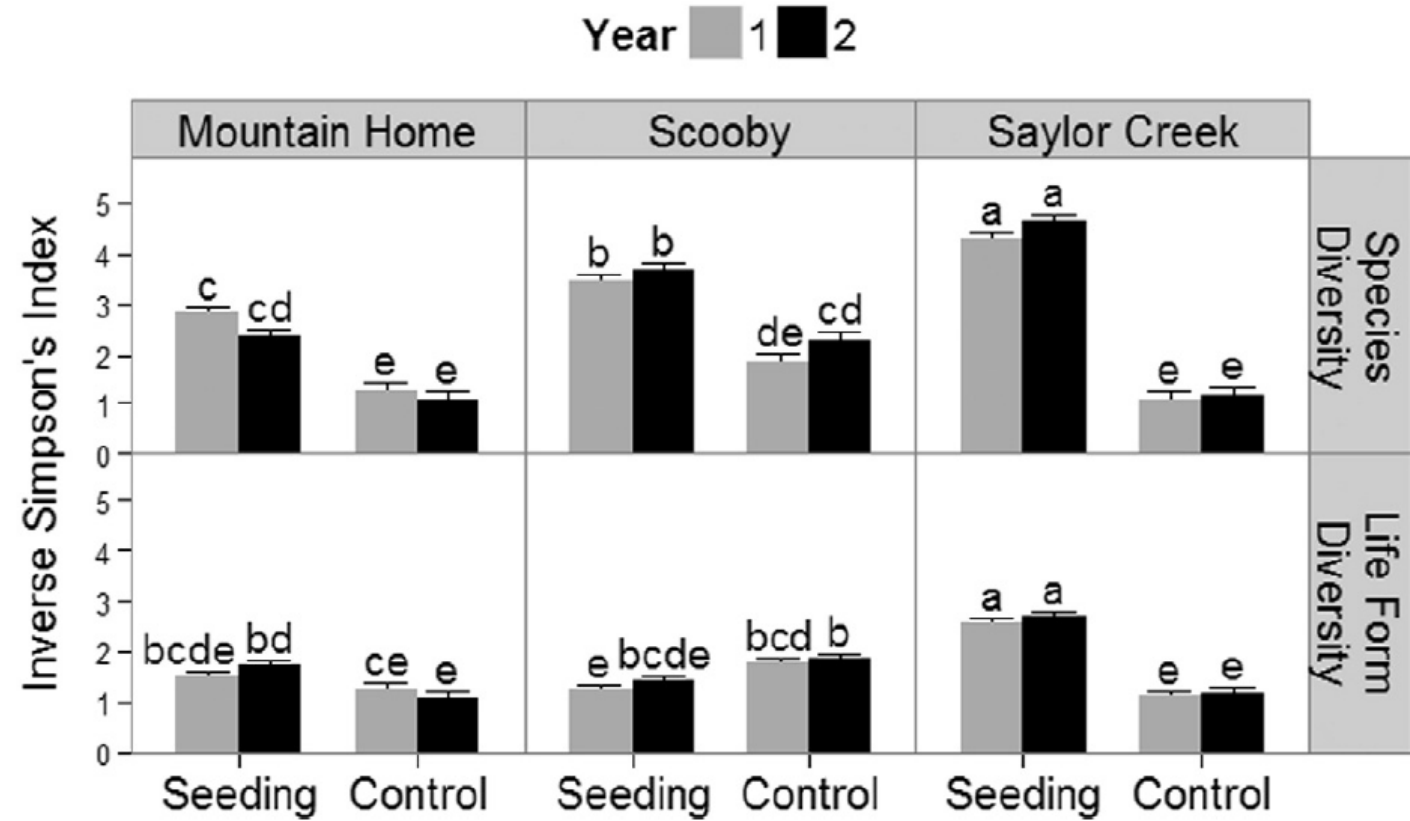
Conventional seeding practices are not working – non-native perennial grasses



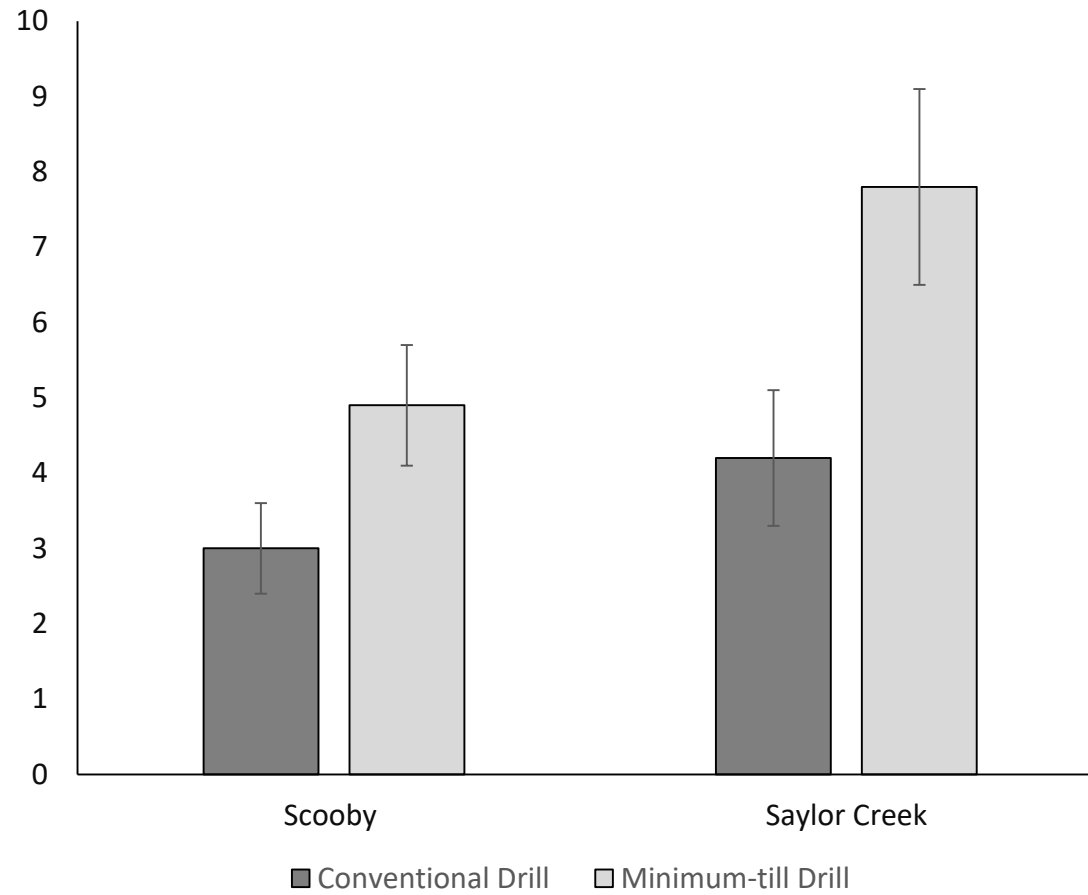
Restoration of native plant communities – sagebrush



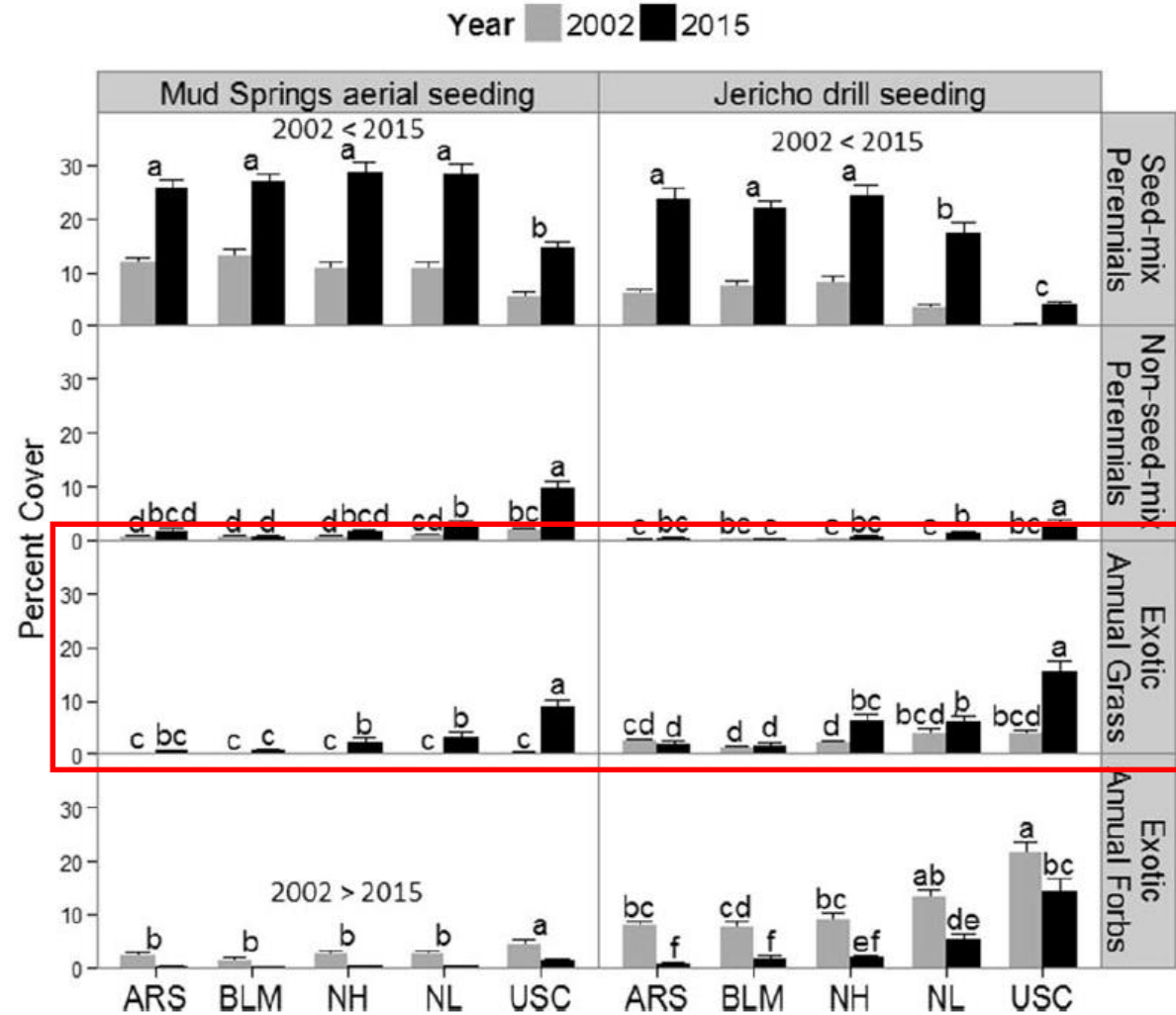
Restoration of native plant communities – diversity



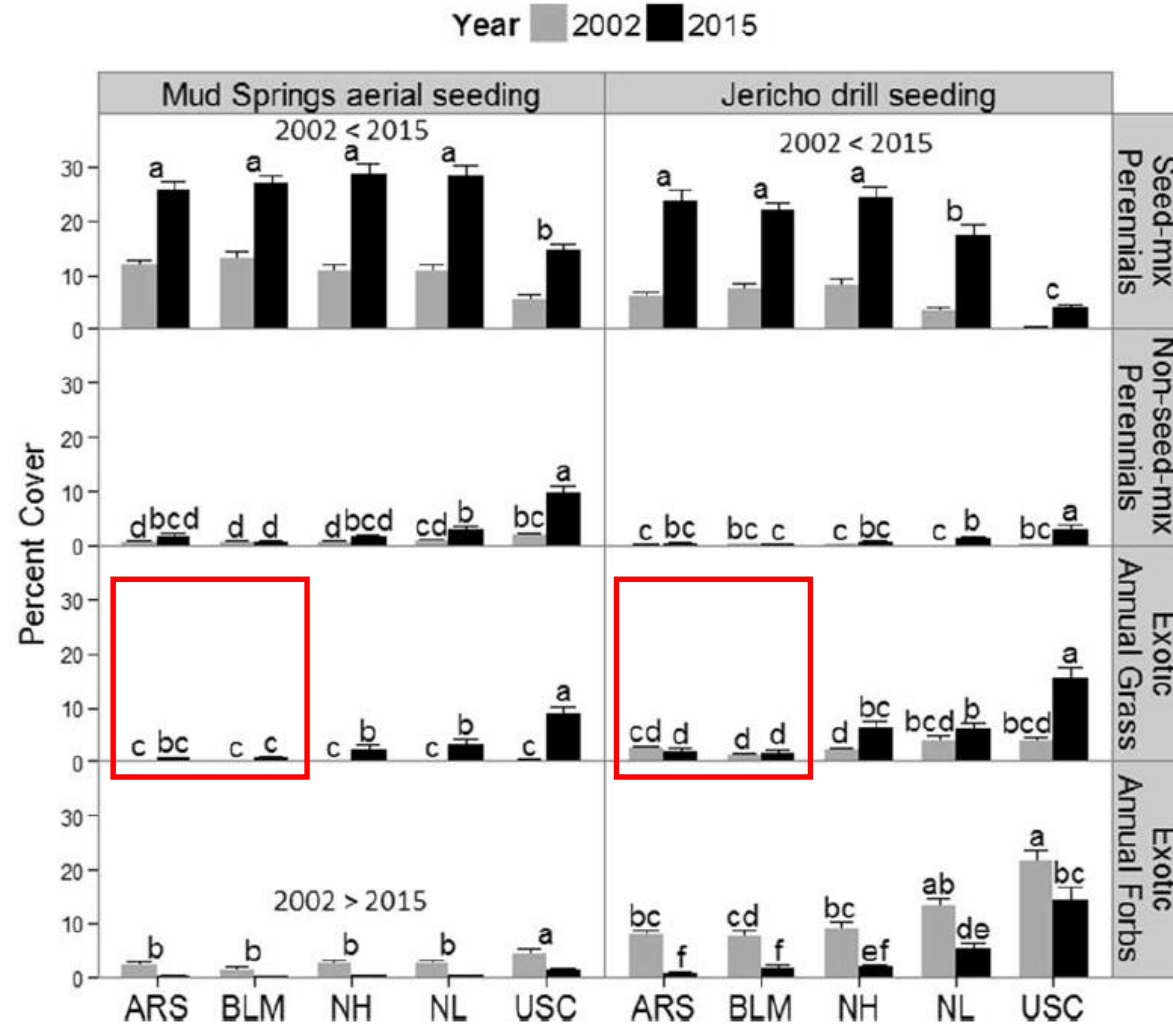
Restoration of native plant communities – forbs



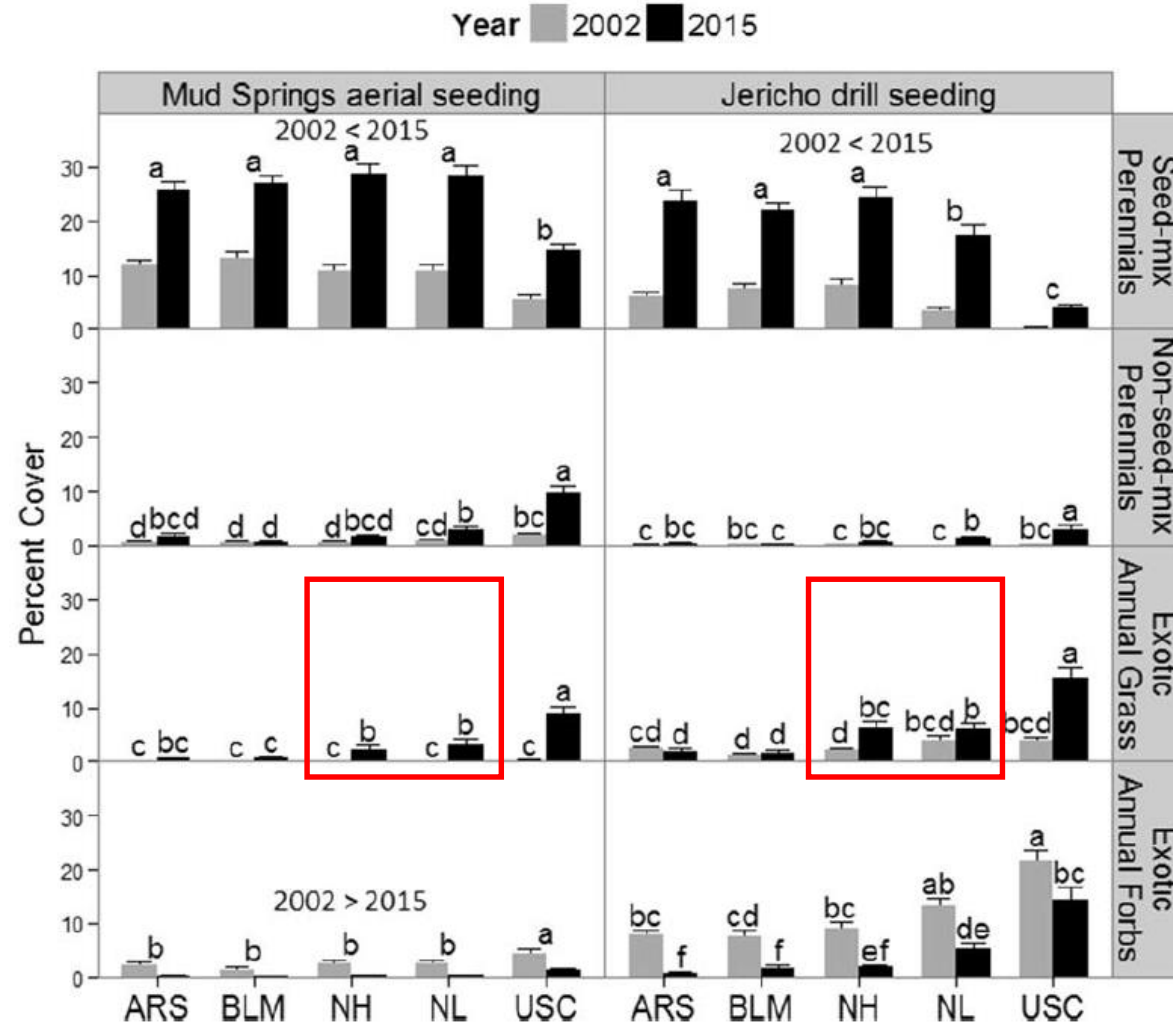
Restoration of native plant communities – cheatgrass suppression



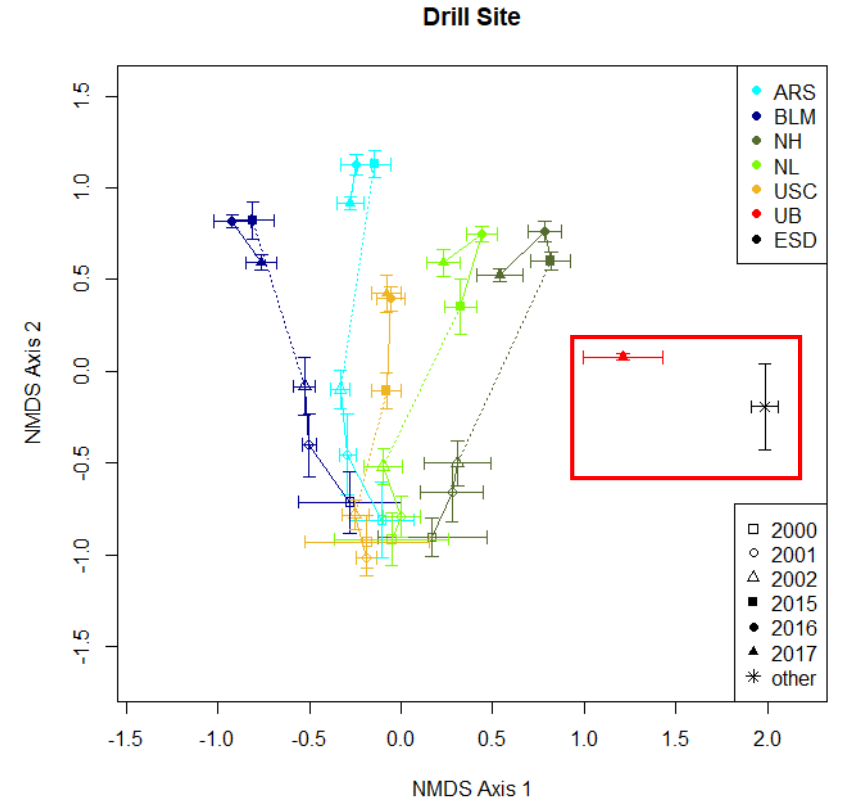
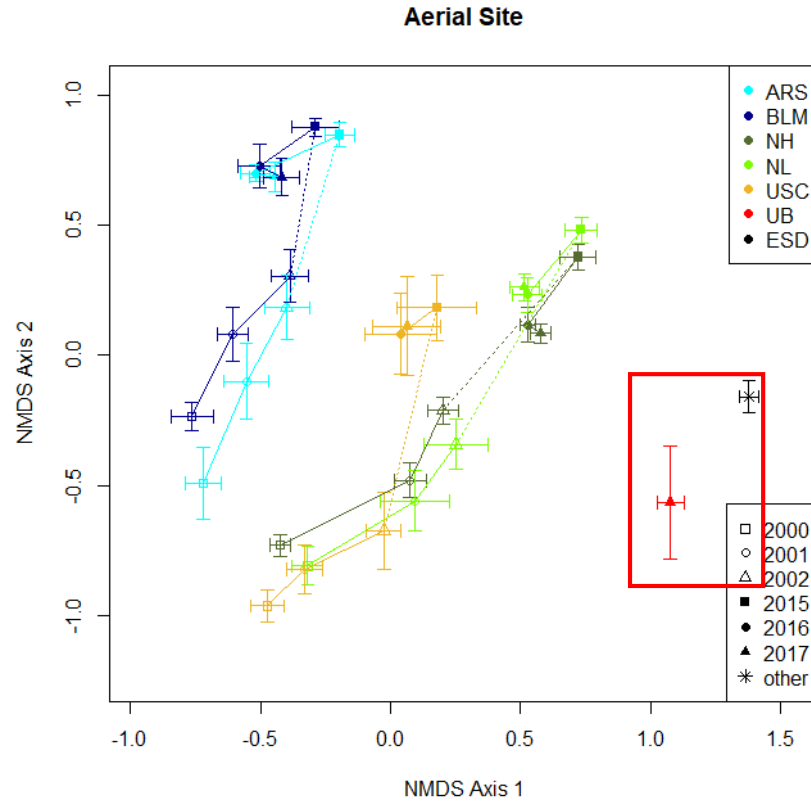
Restoration of native plant communities – cheatgrass suppression



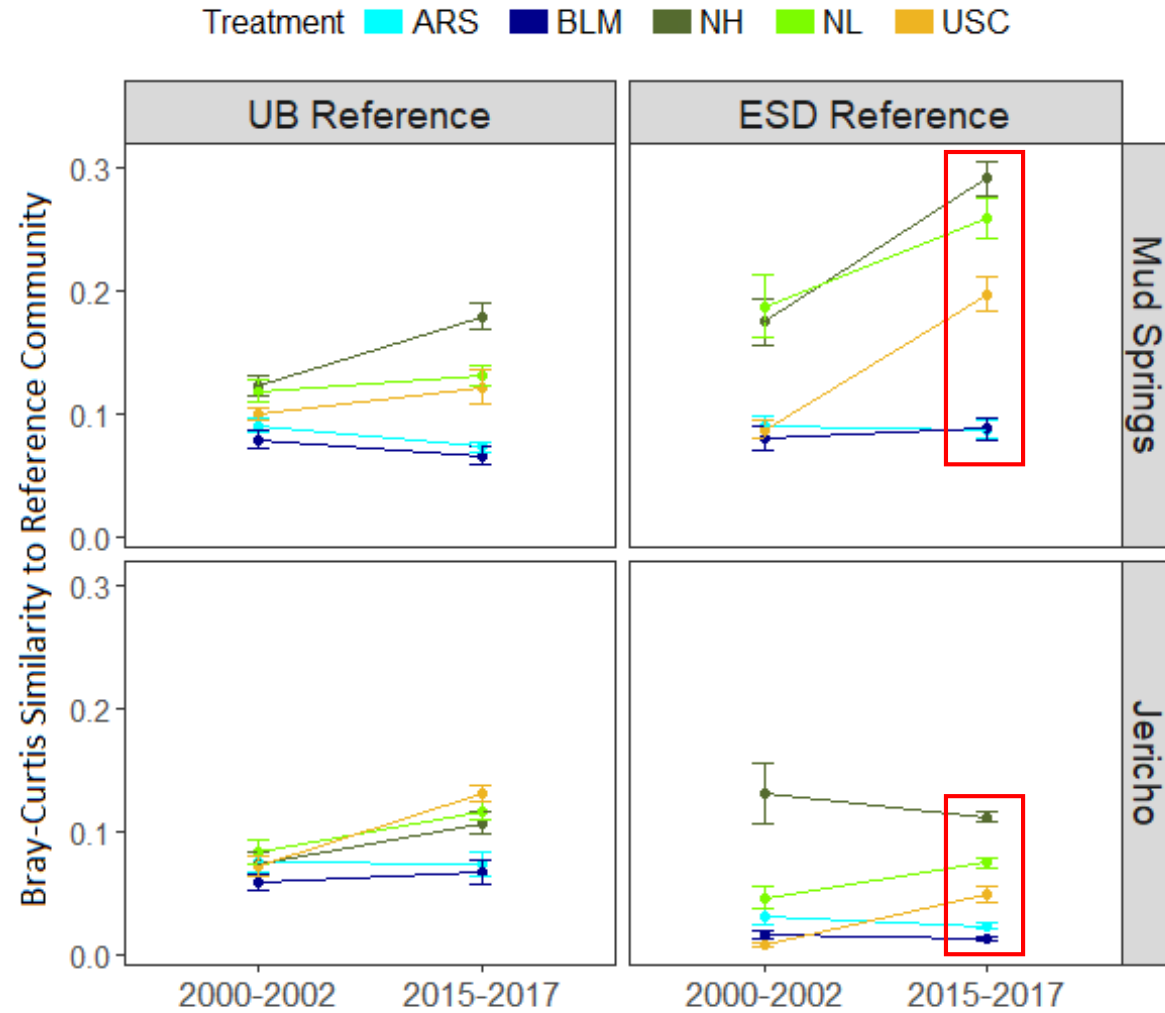
Restoration of native plant communities – cheatgrass suppression



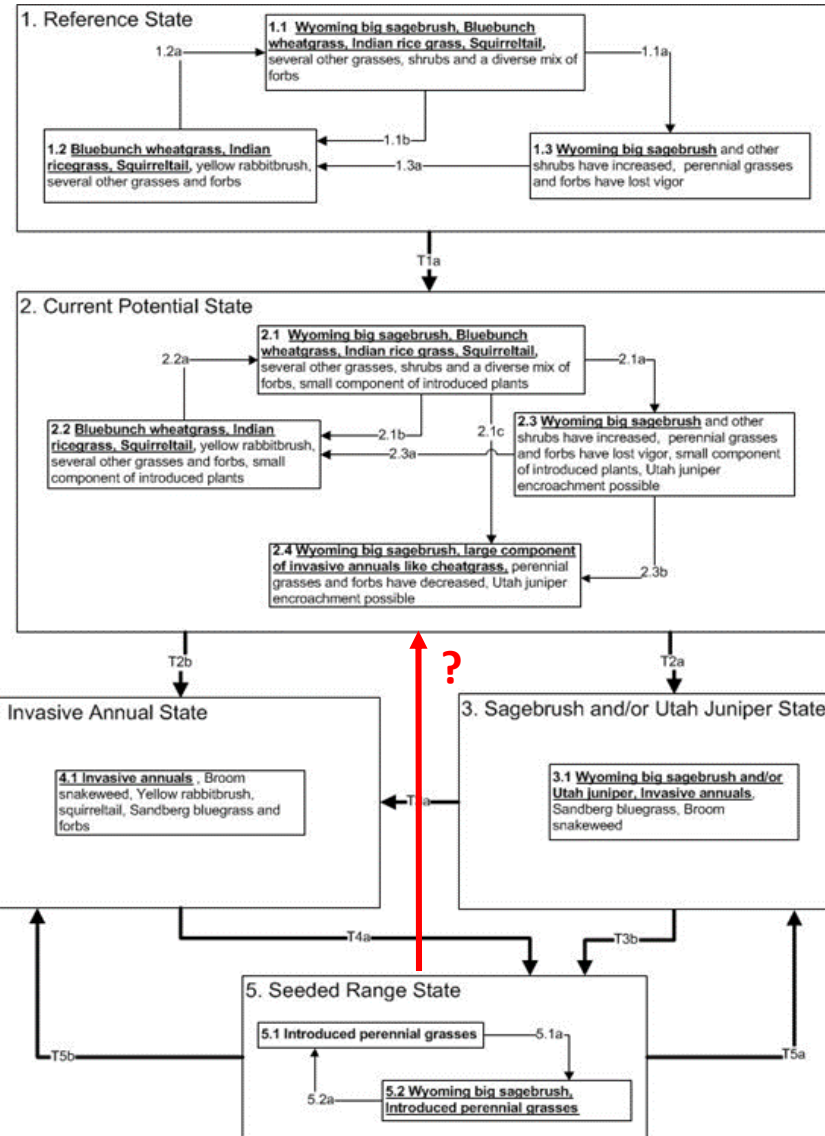
Restoration of native plant communities – successional trajectories



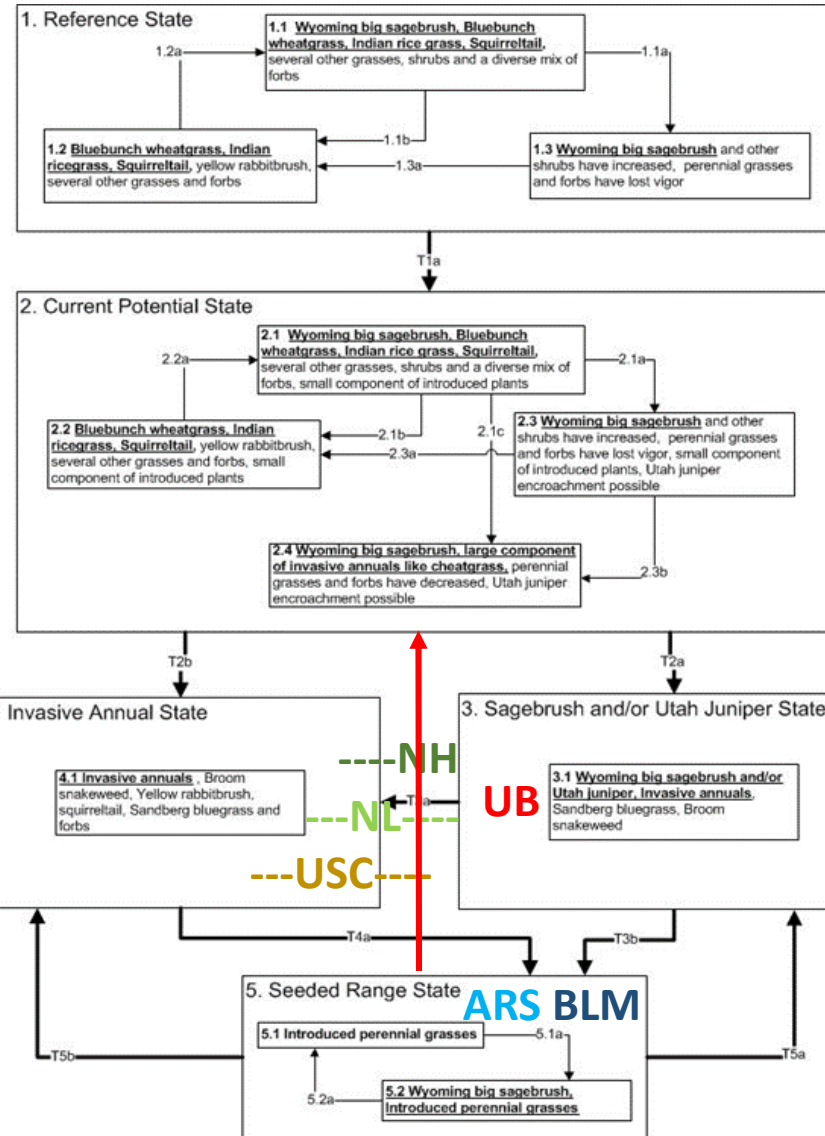
Restoration of native plant communities – successional trajectories



Restoration of native plant communities – successional trajectories



Restoration of native plant communities – successional trajectories



Summary

1. Sage grouse require high diversity plant communities
2. Conventional seed mixes with non-native perennial grasses do not restore plant diversity
3. Seeding native species works!
 - Establish better with the right drills
 - Can suppress cheatgrass
 - Follow successional trajectories that may lead to sage grouse habitat recovery

